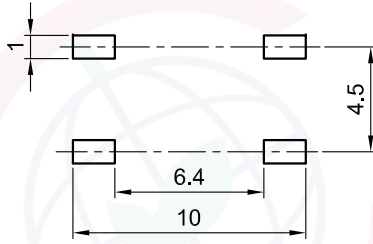
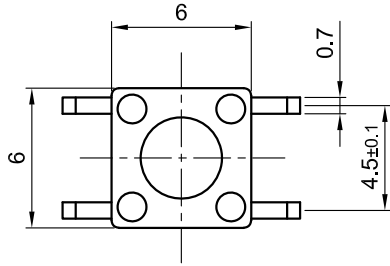


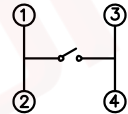
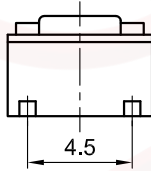
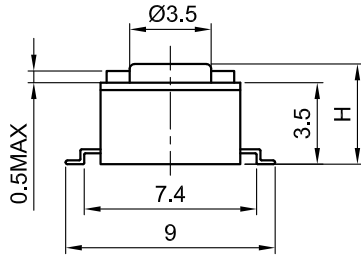
Dept	
Qty	
DC	1
ED	1
IE	1
ISO	1
PD	1
R&D	1
SD	1
QA	1
QC	1
QE	1

The information provided herein is from CONNELY Electronic Co., Ltd. and is confidential. Any disclosure to a party other than the recipient is prohibited. The intellectual properties and its rights contained herein, including but not limited to, trademarks, patents, copyrights, trade secrets, and technical know-how, are owned exclusively by CONNELY or its affiliates. Unauthorized use or modification is strictly prohibited. CONNELY may enforce its intellectual property rights at its own discretion; failures or delays to exercise such rights does not constitute a waiver of such rights.

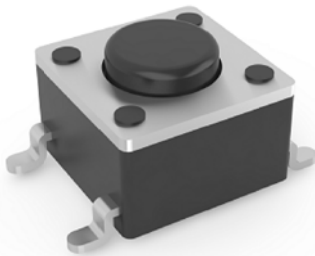
REV.	DESCRIPTION	DRAWN	CHECKED	APPROVED
A	NEW RELEASE	LL 23/06/05		LJC 23/06/05'
B	DRAWING UPDATE	JLZ 08/24/16'	HZW 08/24/16'	LJC 08/24/16'
D	DRAWING UPDATE	JLZ 01/16/19'		



Recommend PCB layout
Tolerance:±0.05



Circuit diagram



(Series Image-Reference Only)

NOTES:

1. Specifications

- Switch Function: Single Pole Single Throw
- Contact Rating: 50mA at 12Vdc
- Insulation Resistance:100MΩ min.
- Contact Resistance:100mΩ max.
- Operating Life:100,00 cycles
- Stop Strength: Place The Switch Such That Vertical, A Static Load Of 3Kgf Shall Be Applied In The Direction
- Operation Temperature Range: -25°C to +70°C
- Wave Soldering: Recommended Solder Temperature At 500°f(260°C)max. 5 Seconds,Subject To PCB 1.6mm Thickness.
- Hand Soldering: Use Soldering Iron Of 30 Watts,Controlled At 608°f(320°C)Approximately 2 Seconds.

2. Product number code:

DS1042-03 - X X X X X X X

- Operating Life
5: 50000 cycles 10: 100000 cycles
20: 200000 cycles 30: 300000 cycles
- Operating Force
130: 130gf 160: 160gf
170: 170gf 250: 250gf 320: 320gf
- Packing Type
A: Polybag B: Tube
R: Tape & Reel
- Actuator Color
K: Black N:Brown E:Salmon
- Housing Color
K: Black N:Brown
- Profile Height(DIM. H)
1:4.3mm 2:5.0mm 3:7.0mm 4:7.3mm
5:9.5mm 6:13.0mm 7:7.5mm 8:8.0mm
9:8.5mm 10:12.0mm 11:12.5mm 12:17.0mm
13:7.8mm 14:9.0mm 15:10.0mm 16:11.0mm
17:15.0mm 18:5.3mm 19:5.5mm 20:6.0mm
21:10.5mm 22:14.0mm 23:16.0mm
- Size
1: 6mm*6mm

GENERAL TOLERANCE	ANGLE TOLERANCE
X. ±0.60	X. ±5°
.X ±0.38	.X ±3°
.XX ±0.25	.XX ±2°

PROJECTION	TITLE
	TACT SWITCH SMT TYPE 6mmX6mm
UNITS	mm
SHEET SIZE	A4
SERIES	DS1042-03 SERIES

DRAWING TYPE	CUSTOMER
SCALE	1:1 SHEET 1 OF 3
DRAWING NO.	C-DS1042-03-1XXXXXX-D

晨翔电子有限公司
CONNELY CONNELY ELECTRONIC CO. LTD

Dept	
Qty	
DC	1
ED	1
IE	1
ISO	1
PD	1
R&D	1
SD	1
QA	1
QC	1
QE	1

The information provided herein is from CONNPLY Electronic Co., Ltd. and is confidential. Any disclosure to a party other than the recipient is prohibited. The intellectual properties and its rights contained herein, including but not limited to, trademarks, patents, copyrights, trade secrets, and technical know-how, are owned exclusively by CONNPLY or its affiliates. Unauthorized use or modification is strictly prohibited. CONNPLY may enforce its intellectual property rights at its own discretion; failures or delays to exercise such rights does not constitute a waiver of such rights.

REV.	DESCRIPTION	DRAWN	CHECKED	APPROVED
A	NEW RELEASE	LL 23/06/05		LJC 23/06/05'
B	DRAWING UPDATE	JLZ 08/24/16'	HZW 08/24/16'	LJC 08/24/16'
E	DRAWING UPDATE	JLZ 12/25/24'		

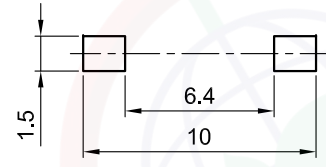
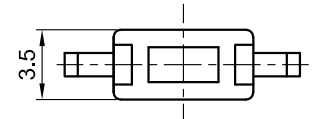
NOTES:

1. Specifications

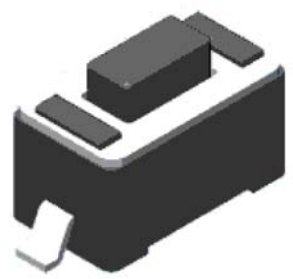
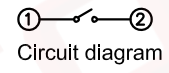
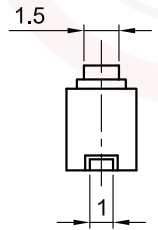
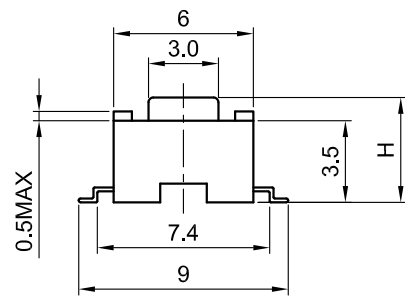
- Switch Function: Single Pole Single Throw
- Contact Rating: 50mA at 12Vdc
- Insulation Resistance: 100MΩ min.
- Contact Resistance: 100mΩ max.
- Operating Life: 100,00 cycles
- Stop Strength: Place The Switch Such That Vertical, A Static Load Of 3Kgf Shall Be Applied In The Direction
- Operation Temperature Range: -25°C to +70°C
- Wave Soldering: Recommended Solder Temperature At 500°F(260°C)max. 5 Seconds, Subject To PCB 1.6mm Thickness.
- Hand Soldering: Use Soldering Iron Of 30 Watts, Controlled At 608°F(320°C) Approximately 2 Seconds.

2. Product number code:

DS1042-03 -	X	X	X	X	X	X	X	
	Operating Life	5: 50000 cycles	10: 100000 cycles	20: 200000 cycles	Operating Force	130: 130gf	160: 160gf	170: 170gf
	Packing Type	A: Polybag	B: Tube	R: Tape & Reel	Actuator Color	K: Black	N: Brown	Housing Color
	Profile Height(DIM. H)	1: 4.3mm	2: 5.0mm	3: 7.0mm	4: 7.3mm	5: 9.5mm	6: 13.0mm	7: 7.5mm
	Size	2: 3mm*6mm						



Recommend PCB layout
Tolerance ±0.05

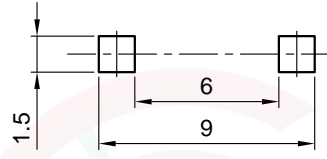
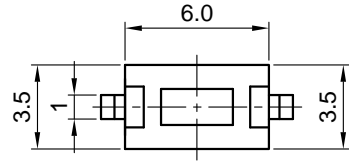


(Series Image-Reference Only)

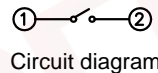
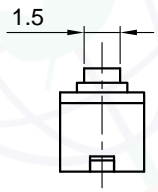
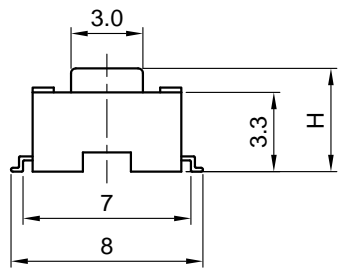
GENERAL TOLERANCE	ANGLE TOLERANCE	PROJECTION		TITLE	TACT SWITCH SMT TYPE 3.5mmX6mm
X. ±0.60	X. ±5°	UNITS	mm	SHEET	A4
.X ±0.38	.X ±3°	SHEET SIZE	A4	SERIES	DS1042-03 SERIES
.XX ±0.25	.XX ±2°	晨翔电子有限公司 CONNPLY CONNPLY ELECTRONIC CO. LTD			
DRAWING TYPE	CUSTOMER				
SCALE	1:1 SHEET 2 OF 3				
DRAWING NO.	C-DS1042-03-2XXXXXX-E				

Dept	
Qty	
DC	1
ED	1
IE	1
ISO	1
PD	1
R&D	1
SD	1
QA	1
QC	1
QE	1

The information provided herein is from CONNELY Electronic Co., Ltd. and is confidential. Any disclosure to a party other than the recipient is prohibited. The intellectual properties and its rights contained herein, including but not limited to, trademarks, patents, copyrights, trade secrets, and technical know-how, are owned exclusively by CONNELY or its affiliates. Unauthorized use or modification is strictly prohibited. CONNELY may enforce its intellectual property rights at its own discretion, failure or delays to exercise such rights does not constitute a waiver of such rights.



Recommend PCB layout
Tolerance±0.05



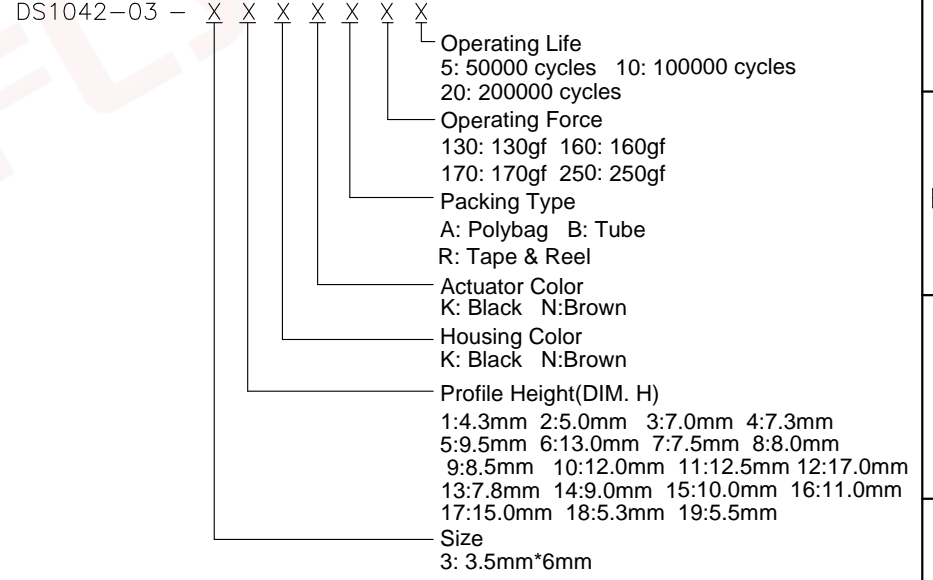
(Series Image-Reference Only)

REV.	DESCRIPTION	DRAWN	CHECKED	APPROVED
A	NEW RELEASE	LL 23/06/05		LJC 23/06/05'
B	DRAWING UPDATE	JLZ 08/24/16'	HZW 08/24/16'	LJC 08/24/16'
D	DRAWING UPDATE	JLZ 01/16/19'		

NOTES:

- Specifications
 - Switch Function: Single Pole Single Throw
 - Contact Rating: 50mA at 12Vdc
 - Insulation Resistance:100MΩ min.
 - Contact Resistance:100mΩ max.
 - Operating Life:100,00 cycles
 - Stop Strength: Place The Switch Such That Vertical, A Static Load Of 3Kgf Shall Be Applied In The Direction
 - Operation Temperature Range: -25°C to +70°C
 - Wave Soldering: Recommended Solder Temperature At 500°f(260°C)max. 5 Seconds,Subject To PCB 1.6mm Thickness.
 - Hand Soldering: Use Soldering Iron Of 30 Watts,Controlled At 608°f(320°C)Approximately 2 Seconds.

2. Product number code:



GENERAL TOLERANCE	ANGLE TOLERANCE	PROJECTION		TITLE	TACT SWITCH SMT TYPE 3.5mmX6mm
X. ±0.60	X. ±5°	UNITS	mm	SHEET	3 OF 3
.X ±0.38	.X ±3°	SHEET SIZE	A4	SERIES	DS1042-03 SERIES
.XX ±0.25	.XX ±2°	晨翔电子有限公司 CONNFLY CONNELY ELECTRONIC CO., LTD			
DRAWING TYPE	CUSTOMER				
SCALE	1:1				
DRAWING NO.	C-DS1042-03-3XXXXXX-D				