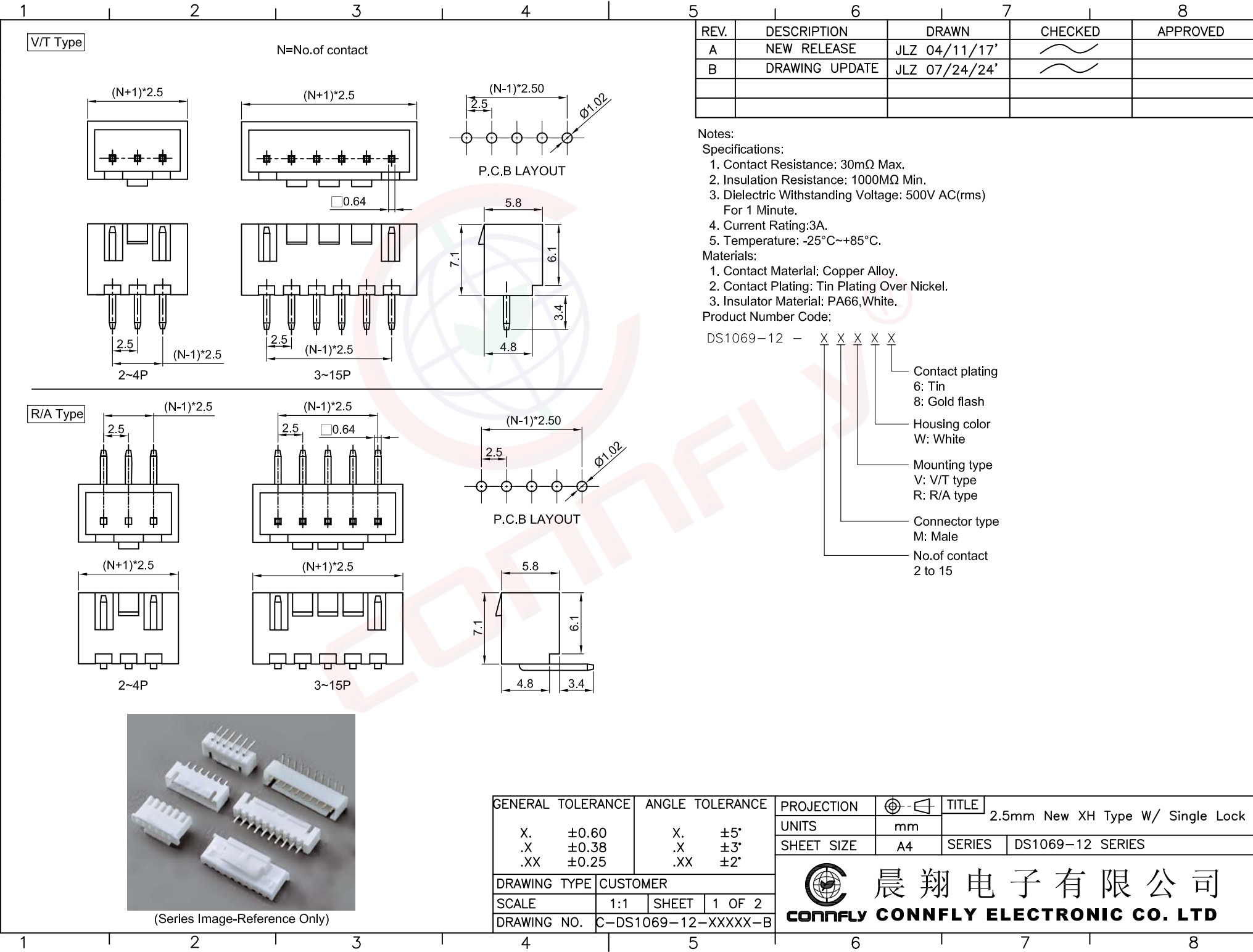


The information provided herein is from CONNELY Electronic Co., Ltd. and is confidential. Any disclosure to a party other than the recipient is prohibited. The intellectual properties and its rights contained herein, including but not limited to, trademarks, patents, copyrights, trade secrets, and technical know-how, are owned exclusively by CONNELY or its affiliates. Unauthorized use of this information in any format or manner. CONNELY may enforce its intellectual property rights at its own discretion; failures or delays to exercise such rights does not constitute a waiver of such rights.

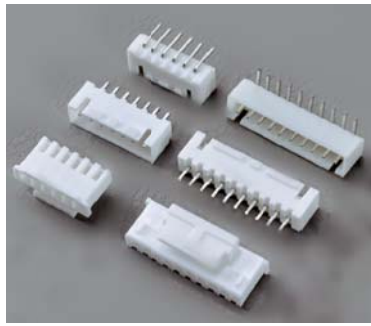


REV.	DESCRIPTION	DRAWN	CHECKED	APPROVED
A	NEW RELEASE	JLZ 04/11/17'		
B	DRAWING UPDATE	JLZ 07/24/24'		

- Notes:**
- Specifications:**
- Contact Resistance: 30mΩ Max.
  - Insulation Resistance: 1000MΩ Min.
  - Dielectric Withstanding Voltage: 500V AC(rms) For 1 Minute.
  - Current Rating: 3A.
  - Temperature: -25°C~+85°C.
- Materials:**
- Contact Material: Copper Alloy.
  - Contact Plating: Tin Plating Over Nickel.
  - Insulator Material: PA66, White.
- Product Number Code:**

DS1069-12 - X X X X X

- Contact plating
- 6: Tin
- 8: Gold flash
- Housing color
- W: White
- Mounting type
- V: V/T type
- R: R/A type
- Connector type
- M: Male
- No. of contact
- 2 to 15



(Series Image-Reference Only)

GENERAL TOLERANCE		ANGLE TOLERANCE		PROJECTION		TITLE	2.5mm New XH Type W/ Single Lock	
X.	±0.60	X.	±5°	UNITS	mm			
.X	±0.38	.X	±3°	SHEET SIZE	A4	SERIES	DS1069-12 SERIES	
.XX	±0.25	.XX	±2°	<b>晨翔电子有限公司</b> <b>CONNELY CONNELY ELECTRONIC CO. LTD</b>				
DRAWING TYPE		CUSTOMER						
SCALE	1:1	SHEET	1 OF 2					
DRAWING NO.		C-DS1069-12-XXXXX-B						

The information provided herein is from CONNELY Electronic Co., Ltd. and is confidential. Any disclosure to a party other than the recipient is prohibited. The intellectual properties and its rights contained herein, including but not limited to, trademarks, patents, copyrights, trade secrets, and technical know-how, are owned exclusively by CONNELY or its affiliates. Unauthorized use of this information in any format or manner. CONNELY may enforce its intellectual property rights at its own discretion; failures or delays to exercise such rights does not constitute a waiver of such rights.

1                      2                      3                      4                      5                      6                      7                      8

REV.	DESCRIPTION	DRAWN	CHECKED	APPROVED
A	NEW RELEASE	JLZ 04/11/17'		
B	DRAWING UPDATE	JLZ 07/24/24'		

Notes:

Specifications:

- Contact Resistance: 30mΩ Max.
- Insulation Resistance: 1000MΩ Min.
- Dielectric Withstanding Voltage: 500V AC(rms) For 1 Minute.
- Current Rating:3A.
- Temperature: -25°C~+85°C.

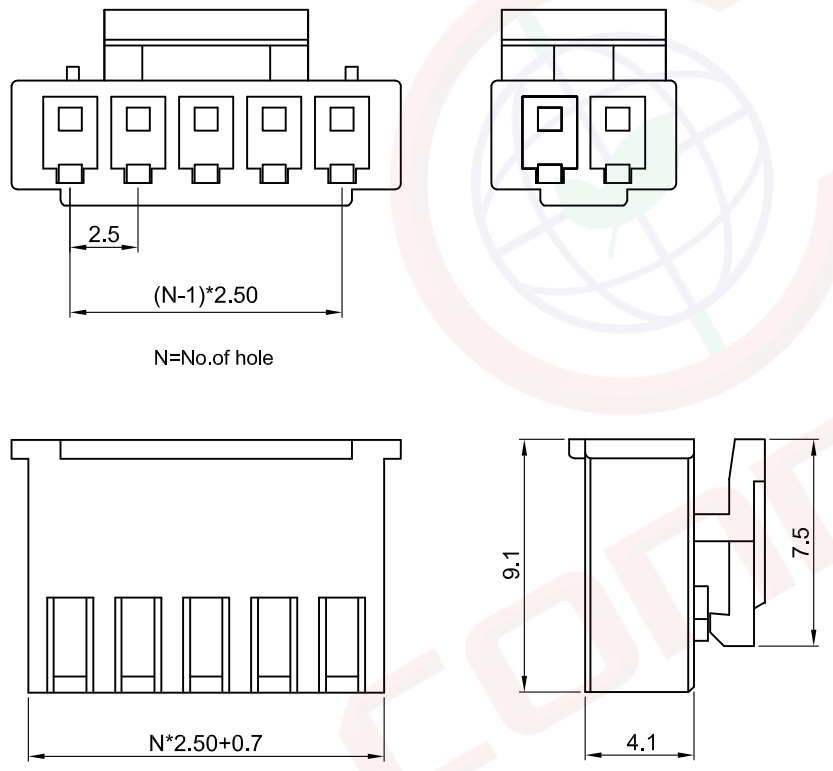
Materials:

- Insulator Material: PA66,White.

Product Number Code:

I-DS1069-12 - S C X 0 X

No.of hole: 02 to 15  
 Housing color: W: White



GENERAL TOLERANCE		ANGLE TOLERANCE		PROJECTION		TITLE	2.5mm New XH Type W/ Single Lock		
X.	±0.60	X.	±5°	UNITS	mm	SHEET SIZE	A4	SERIES	DS1069-12 SERIES
.X	±0.38	.X	±3°	<b>晨翔电子有限公司</b> <b>CONNELY CONNELY ELECTRONIC CO. LTD</b>					
.XX	±0.25	.XX	±2°						
DRAWING TYPE		CUSTOMER		DRAWING NO. C-DS1069-12-XXXXX-B					
SCALE		1:1	SHEET		2 OF 2				

1                      2                      3                      4                      5                      6                      7                      8