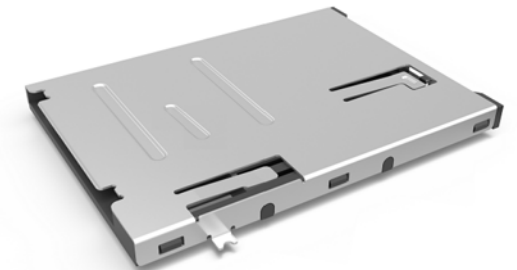
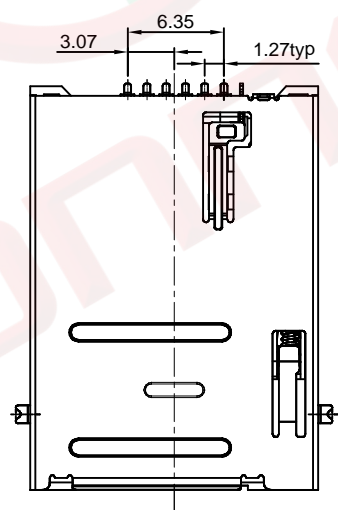
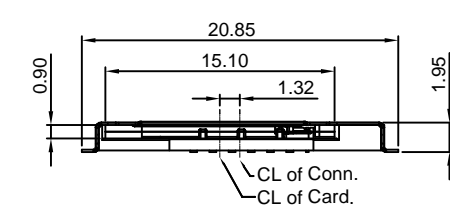
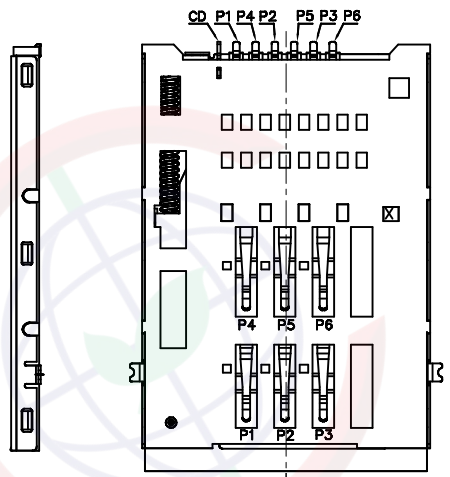
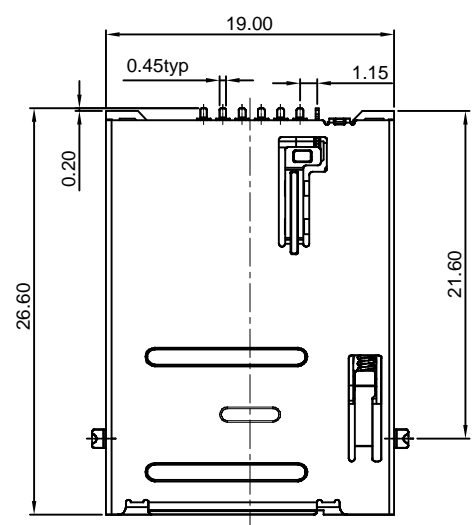


Dept	
Qty	
DC	1
ED	1
IE	1
ISO	1
PD	1
R&D	1
SD	1
QA	1
QC	1
QF	1

The information provided herein is from CONNELY Electronic Co., Ltd. and is confidential. Any disclosure to a party other than the recipient is prohibited. The intellectual properties and its rights contained herein, including but not limited to, trademarks, patents, copyrights, trade secrets, and technical know-how, are owned exclusively by CONNELY or its affiliates. Unauthorized use or reproduction of any part of this document is strictly prohibited. CONNELY reserves the right to make changes to this document without notice and to exercise such rights as it deems necessary. The information provided herein is for reference only and does not constitute a contract. CONNELY may enforce its intellectual property rights at its own discretion, failures or delays to exercise such rights does not constitute a waiver of such rights.



(Series Image-Reference Only)

REV.	DESCRIPTION	DRAWN	CHECKED	APPROVED
A	NEW RELEASE	JLZ 10/07/14'		
B	DRAWING UPDATE	JLZ 09/27/22'		

Notes:

- Material:
 - Housing: High Temperature LCP UL 94V-0 Color of Black.
 - Contacts: Copper Alloy.
 - Shell: Stainless Steel.
- Finish:
 - Contact Area: Gold Over Nickel.
 - Solder Area: Matte Tin.
- Specifications:
 - Operating Temperature: -40 °C~+85 °C.
 - Insulating Resistance: 100MΩ Min.
 - Contact Resistance: 100mΩ Max.
 - Withstanding Voltage: 500V AC 1min.
 - Voltage Rating: 30V AC/DC.
 - Current Rating: 0.5A.
- Product Number Code:

DS1138-05 - XX X X X X X X

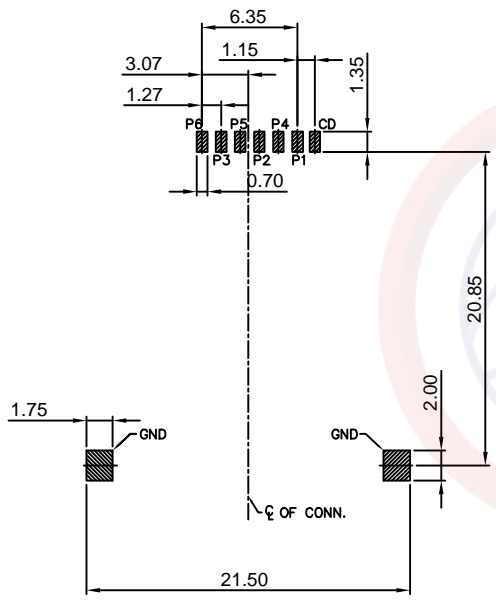
- Packing Type
R: Tape On Reel
- Shell Materials
S: Stainless
- Housing color
B: Black
- Contact Plating
0: Selective gold flash
4: Selective 3u" gold
- Mounting type
S: SMT type
- Connector type
S: Socket
- No. of contacts
06:6pin

GENERAL TOLERANCE		ANGLE TOLERANCE		PROJECTION		TITLE	Push Push Type SIM Card 6P
X.	±0.60	X.	±5°	UNITS	mm		SMT Type W/O Post H=2.0mm
.X	±0.38	.X	±3°	SHEET SIZE	A4	SERIES	DS1138-05 SERIES
.XX	±0.25	.XX	±2°	晨翔电子有限公司 CONNFLY CONNELY ELECTRONIC CO. LTD			
DRAWING TYPE		CUSTOMER					
SCALE		1:1					
DRAWING NO.		C-DS1138-05-XXXXXX-B					

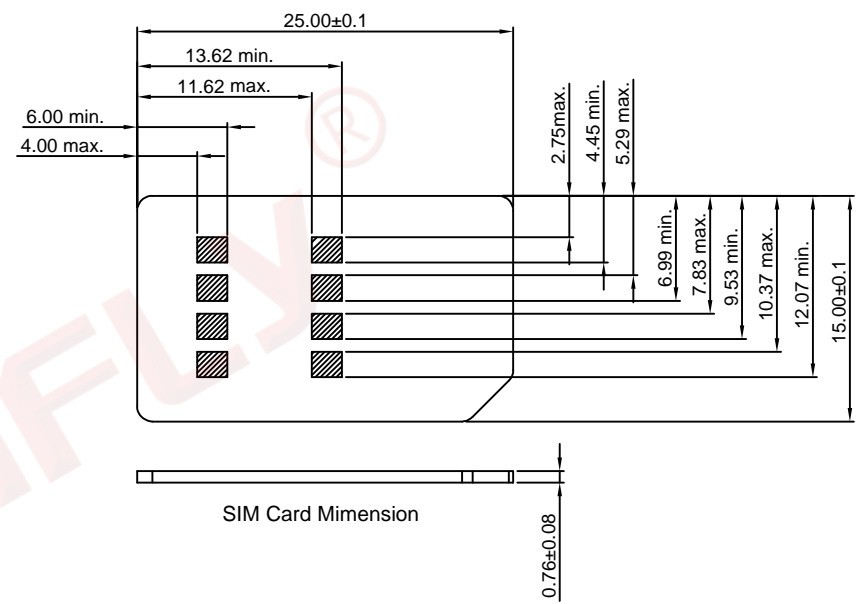
Dept	Qty
DC	1
ED	1
IE	1
ISO	1
PD	1
R&D	1
SD	1
QA	1
QC	1
QE	1

REV.	DESCRIPTION	DRAWN	CHECKED	APPROVED
A	NEW RELEASE	JLZ 10/07/14'		
B	DRAWING UPDATE	JLZ 09/27/22'		

The information provided herein is from CONNELY Electronic Co., Ltd. and is confidential. Any disclosure to a party other than the recipient is prohibited. The intellectual properties and its rights contained herein, including but not limited to, trademarks, patents, copyrights, trade secrets, and technical know-how, are owned exclusively by CONNELY or its affiliates. Unauthorized use or reproduction of any part of this document is strictly prohibited. CONNELY may enforce its intellectual property rights at its own discretion, failures or delays to exercise such rights does not constitute a waiver of such rights.

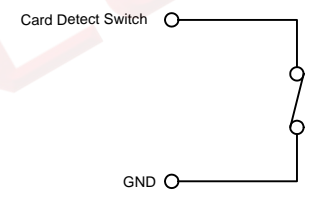


Recommend PCB layout
(Tolerance:±0.05)



SIM Card Mimension

PIN ASSIGNMENTS	
CONNECTOR TERMINAL NO.	PIN NO.
PIN 1	VCC: PWR SIGNAL AND GND
PIN 2	RST; RESET SIGNAL
PIN 3	CLK: CLOCKING SIGNAL
PIN 4	GND: PWR SIGNAL AND GND
PIN 5	VPP: PROGRAMMING VOLTAGE
PIN 6	I/O: SERIAL DATE INPUT/OUTPUT



Part name	Material	QTY
Dummy card	HIGH TEMP, Plastic	1 PCS
CD Terminal	Copper alloy	1 PCS
Slider	HIGH TEMP, Plastic	1 PCS
Hook	Stainless steel	1 PCS
Shell	SWP	1 PCS
Spring	Stainless stell	1 PCS
Treminal	Copper alloy	6 PCS
Housing	HIGH TEMP. Plastic	1 PCS

GENERAL TOLERANCE		ANGLE TOLERANCE	
X.	±0.60	X.	±5°
.X	±0.38	.X	±3°
.XX	±0.25	.XX	±2°
DRAWING TYPE		CUSTOMER	
SCALE	1:1	SHEET	2 OF 2
DRAWING NO.	C-DS1138-05-XXXXXX-B		

PROJECTION	TITLE
	Push Push Type SIM Card 6P SMT Type W/O Post H=2.0mm
UNITS	mm
SHEET SIZE	A4
SERIES	DS1138-05 SERIES

晨翔电子有限公司
CONNFLY CONNELY ELECTRONIC CO. LTD