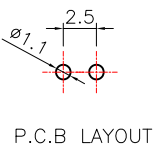
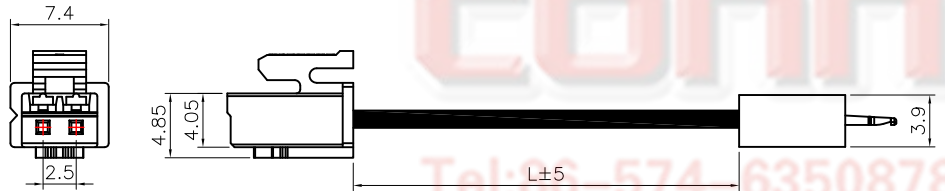


The information provided herein is from CONNELY Electronic Co., Ltd. and is confidential. Any disclosure to a party other than the recipient is prohibited. The intellectual properties and its rights contained herein, including but not limited to, trademarks, patents, copyrights, trade secrets, and technical know-how, are owned exclusively by CONNELY or its affiliates. Unauthorized use of this information in any format or manner. CONNELY may enforce its intellectual property rights at its own discretion; failures or delays to exercise such rights does not constitute a waiver of such rights.

Dept	REV.	DESCRIPTION	DRAWN	CHECKED	APPROVED
Qty	A	NEW RELEASE	JLZ 08/18/18'		
DC					
ED					
IE					
ISO					
PD					
R&D					
SD					
QA					
QC					
QE					

- NOTES:
- Materials:
 - 1.1 Housing material: NYLON 66
 - 1.2 Contact: Copper Alloy
 - 1.3 Wire Insulator: PVC
 - 1.4 Wire: Tin Plated Copper
 - Specifications:
 - 2.1 Current Rating:1.5A
 - 2.2 Voltage Rating:250V AC/DC
 - 2.3 Contact Resistance: 200mΩ Max.
 - 2.4 Insulation resistance: 500MΩ Min.
 - 2.5 Wire Range:AWG#22~26
 - Product Number Code:
 - DS1069-13 - X X X X X X X

X X X X X X X
 Wire length(DIM L)
 060: 60mm
 999: 999mm
 Housing color
 W: White
 Contact plating
 6: Full Tin
 Mounting type
 C: Crimp
 W: Crimp+Solder
 Wire gauge
 26: AWG #26 24: AWG #24
 22: AWG #22
 Connector type
 F: Female
 No.of contacts
 02



CONNFLY

Tel:86-574-63508787
 Fax:86-574-63510817
 Email: info@connfly.com
 http://www.connfly.com
 Add:East Industry Zone KuangYan
 Town Cixi Ningbo China
 P.C:315333

GENERAL TOLERANCE		ANGLE TOLERANCE		PROJECTION		TITLE	2.5mm XH+SCN TYPE CABLE WITH CRIMP+SOLDERING
X.	±0.60	X.	±5°	UNITS	mm	SHEET	
.X	±0.38	.X	±3°	SHEET SIZE	A4	SERIES	DS1069-13 SERIES
.XX	±0.25	.XX	±2°	晨翔电子有限公司 CONNFLY CONNELY ELECTRONIC CO. LTD			
DRAWING TYPE		CUSTOMER					
SCALE		1:1 SHEET 1 OF 1					
DRAWING NO.		C-DS1069-13-XXXXXXX-A					